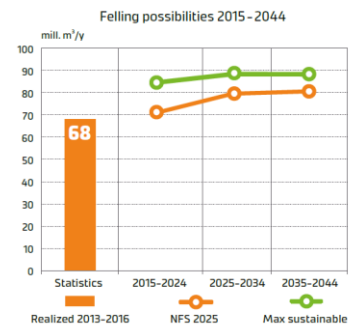
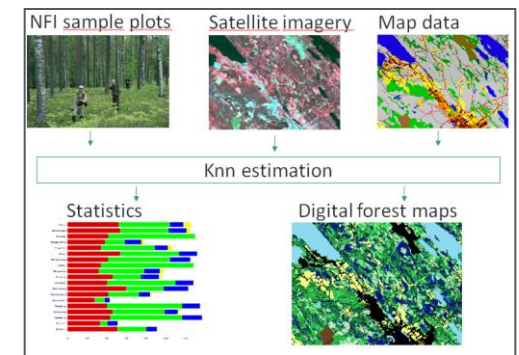
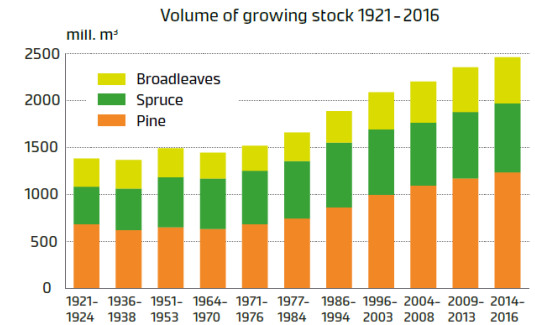


Forest Inventory and Forest Planning Group Luke/Bioeconomy and Society

- Group Manager: Dr. Kari T. Korhonen
- 29 scientists, incl. 2 professors
- Tasks and expertise:
 - National Forest Inventory of Finland
 - Future cutting possibilities analyses
 - Research: forest inventory methods, remote sensing, forest planning, spatial planning in multipurpose forestry
 - Customer services
 - Tailored analyses on forest resources and cutting possibilities
 - Software and tools: forest inventory, forest planning
 - Developing forest and land use monitoring systems for developing countries, including carbon pools



Examples of projects

- NFI2020 (prof. Annika Kangas)
 - new measuring instruments, remote sensing, statistical methods, use of forest resource data in land use planning, www-service for data sharing
- Diabolo (prof. Tuula Packalen)
 - Distributed, integrated and harmonised forest information for bio-economy outlooks
 - H2020 project with 33 partners from 25 European countries
- IC-MNFI Myanmar
 - Support to implementation of NFI in Myanmar
 - Training on forest inventory, remot sensing, statistical sampling, soil carbon measurements
- BioHub
 - Decision support to set up new forest biomass terminals for future refining industries
- BuSK – Building Shared Knowledge capital to support natural resource governance in the Northern periphery - 2016-2019
 - Developing participatory GIS methods in local knowledge collection for land use planning
 - Coord. Luke, 1,9 M€, 7 partners from 11 regions

