

SOCCA afternoon café –
Researchers' handicraft or how to
improve proposal writing through adding a
social and cultural sustainability perspective

02.09.2021, Online
14-15.30

Kristina Svells (SOCCA) and
Katriina Soini (Sustainability LAB)



Today's program

I. Introduction

- Kristina Svels – SOCCA
- Katriina Soini – Sustainability LAB

II. Panel discussion - **Researchers' handicraft - “How to communicate social and cultural sustainability from social science perspectives in multi/inter/trans-disciplinary environmental research applications”**

- Research Professor Hilkka Vihinen, BITA / Rural studies, land use and natural resource governance
- Research Professor Juha Hiedanpää, BITA/ Rural studies, land use and natural resource governance
- Manager Dr. Laura Kitti, Research and customer relationships
- Moderator Dr. Kristina Svels, SOCCA

What is SOCCA?

SOCCA - Socially and Culturally Sustainable Natural Resource Governance.

- a project funded by **Luke Thematic Call 2019** (started 2020) under the Research Theme: *"Social acceptance, governance and decision support for the use of natural resources"*

General aim?

- to understand better the **research capacities** we at Luke have on Social, Cultural, Policy and Institutional dimensions, in the context of NR governance.

Why?

- To understand our **strengths and constrains** in responding to the growing needs for understanding how these dimensions or issues shape the transitionary pathways to sustainability and sustainable NR governance.

SOCCA Objectives 1-3



Internal LUKE [article review](#) 2020

SOCCA coffee
2.9.2021

**Sosiaalinen ja
kulttuurinen
kestävyys
luonnonvarojen
hallinnassa, 2021
Luke publ. series**

Draft article - **Value
conflicts in animal
welfare**

=> proposed *Studia
Generalia* seminar
series **2022**

Sosiaalinen ja kulttuurinen kestävyys luonnonvarojen hallinnassa - Socially and Culturally Sustainable Natural Resource Governance (SOCCA)

Katriina Soini, Kristina Svelds,
Päivi Abernethy, Mikko Jokinen
and Ann Ojala,
Luonnonvara- ja biotalouden
tutkimus 62/2021.

<http://urn.fi/URN:ISBN:978-952-380-269-8>





A virtual platform to
strengthen Luke's
expertise, visibility and
impact
in holistic sustainability
research and policy.

Three modes of working

- Publications: Sustainability review – pilot, Social and Cultural Sustainability
- Small projects: SÖPU – holistic sustainability of forest sector; THINK – indicators for holistic sustainability for forestry

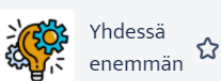
**INTEGRATION OF
KNOWLEDGE**
decision making support

**SCIENCE-POLICY-
SOCIETY INTERFACE**
societal impact

**KNOWLEDGE HUB
AND NETWORKING**
capacity building

- SCIBES – networking and expert work on biodiversity
- Kestävyyspaneeli

Lectures and workshops
Practical support for the work:
guidebooks, networking opportunities, mapping of expertise



Yhdessä
enemmän

Blogi

SIVUPUU

• LukeTALKS1 (08.06.2020)

• Me rakennamme tule

• Sustainability Lab

• Activities and proje

• Coordination team

Tilan työkalut

Aloitussivu / Yhdessä enemmän -työtila



Muokkaa



Sustainability Lab

Lisännyt [Nieminen Kaisa](#) 1, viimeksi muokannut [Mäkilä Outi](#) eilen 9:27 ap.

Luke's Resilience research programme proudly presents: Sustainability Lab is ready to go!

Sustainability Lab - what is it about?

Sustainability issues and problems are typically complex or "wicked" requiring involvement of multiple disciplines, sectors, variety of research approaches, (big) data and sometimes involvement of relevant stakeholders to become understood and solved. We have all these ingredients at hands at Luke, we just have to put them together, take the leadership in the research on sustainable use and governance of natural resources and enhance our visibility in sustainability research. Sustainability Lab is a platform for us to make this happen!

Luo uutinen

News

How to contribute to and follow the activities of Sustainability Lab?

01.09.2021 – Soini Katriina

It is very simple: you may join to Sustainability Lab - mailing list, where you will be informed about the sustainability related activities at Luke and even more broadly. You can also disseminate relevant...

→ lisää

Yhdessä enemmän

Join the mailing list by dropping a mail to katriina.soini@luke.fi



Chat

Events

Links

For more information
katriina.soini@luke.fi, meri.kallasvuo@luke.fi



II. Panel discussion on...

Researchers' handicraft

—

How should we successfully communicate social and cultural sustainability from social science perspectives in multi/inter/trans-disciplinary environmental research applications?

How do we open the doors?



Members of the panel

Hilkka Vihinen, Research professor in Rural Policy

Juha Hiedanpää, Research professor in Natural Resource and Environmental Policy and Governance

Laura Kitti, Manager of Research and customer relationships at Luke



Hilkka: experiences

Background: evaluating FP6, FP7 and Horizon proposals, Nordic and British calls; (can recommend)

More general remarks, hopefully useful in this context...

Proposal phase: include the SC sustainability in the overall framework and approach as soon as possible, difficult to add later

Panel: a lot depends on the composition;

If it is a multi-actor call, at least one of the evaluators most probably not a researcher;

The evaluation panel has to reach a compromise

Hilkka: Evaluation situation in general

Evaluation process has to be efficient

Only few hours / proposal for remote evaluation

1,5 – 2 days for the final evaluation, always done in a hurry

Intensive and quick – help the enthusiastic reviewer by framing the strong SC sustainability argument; link to the call text (objectives, impact)

Impact at least as important as *excellence*

Operationalise in a convincing, concrete way

Hilkka: Impact is crucial

May be evaluated first: As important as the scientific evaluation

Design the SC sustainability analysis so that it serves the impact you promise

Make it concrete: what kind of impact, when, to whom and if possible, offer indicators (in a table)

Not enough to show that the project will contribute to all expected impacts, you have to describe clearly the rationale and mechanisms: how your outputs achieve these impacts

Connect to different DGs always when possible

Connect to Presidency countries and their ambitions if possible

Connect to other H2020 projects, not just a list but in which way the connection will have impact- quality more important than the amount

Hilkka: Social challenge

If possible, include an overview of the relevant EU-policy measures, also what is under preparation

Connect to current discussions in the EU

But be brief! The more to the point, the better

If multi-actor, show that they have been involved already in preparation; show direct interaction, link to SC sustainability

Knowledge transfer is not enough for multi-actor projects

How to communicate social and cultural sustainability from social science perspectives in multi/inter/trans-disciplinary ~~environmental~~ natural resources research applications

Laura Kitti

Project centre

Laura: Horizon Europe, ~95,5 billion euros for 2021 –2027



Pillar 1 EXCELLENT SCIENCE

European Research Council

Marie Skłodowska-Curie Actions

Research Infrastructures



Pillar 2 GLOBAL CHALLENGES & EUROPEAN INDUSTRIAL COMPETITIVENESS

Clusters

- Health
- Culture, Creativity and Inclusive Society
- Civil Security for Society
- Digital, Industry and Space
- Climate, Energy and Mobility
- Food, Bioeconomy, Natural Resources, Agriculture and Environment

Joint Research Centre



Pillar 3 INNOVATIVE EUROPE

European Innovation Council

European innovation ecosystems

European Institute
of Innovation and Technology

WIDENING PARTICIPATION AND STRENGTHENING THE EUROPEAN RESEARCH AREA

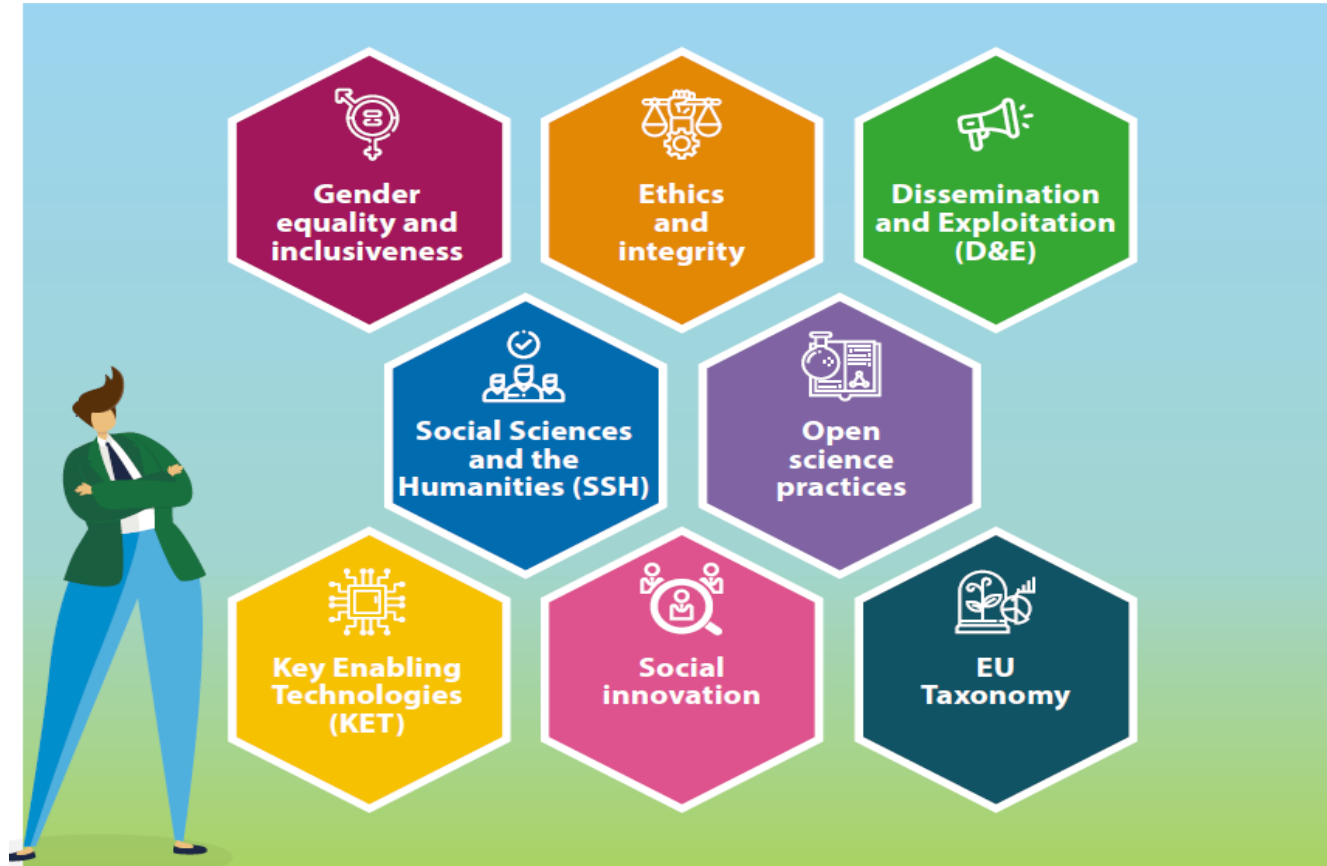
Widening participation and spreading excellence

Reforming and Enhancing the European R&I system

Four key strategic orientations for greater impact



THE EIGHT HORIZONTAL TOPICS



² Regulation (EU) 2020/852 on the establishment of a framework to facilitate sustainable investment, and amending Regulation (EU) 2019/2088

Laura: Social Sciences and Humanities (SSH)

- The effective integration of social sciences and humanities (SSH) in all clusters, including all missions and partnerships, is a principle through the programme cycle.
- SSH are a key constituent of research and innovation, especially regarding the twin green and digital transitions.
- This will be reflected by flagging specific topics and requesting an assessment of their societal impact.
- For these topics, SSH should be integrated from the drafting of the topic to the selection and evaluation of projects by evaluators with demonstrable SSH expertise.
- The expected societal impact must be explicitly set out in the topics, projects, deliverables and outputs.

Destination 2 – Expected impact

- Proposals for topics under this Destination should set out credible pathways contributing to **fair, health safe, climate and environmentally-friendly and resilient food systems from primary production to consumption, ensuring food and nutrition security for all within planetary boundaries in the EU and globally.**
- More specifically, proposals should contribute to one or more of the following impacts:
 - Sustainable, productive and climate-neutral and resilient farming systems** providing consumers affordable, safe, traceable healthy and sustainable food, while minimising pressure on ecosystems restoring and enhancing biodiversity, improving public health and generating fair economic return for farmers;
 - Sustainable fisheries and aquaculture** increasing aquatic biomass production, diversification and consumption of seafood products for a fair, healthy, climate resilient and environmentally friendly food systems with low impact on aquatic ecosystems and high animal welfare;
 - Sustainable, healthy and inclusive food systems** delivering co-benefits for climate mitigation and adaptation, environmental sustainability and circularity, sustainable healthy nutrition and safe food consumption, food poverty reduction, inclusion of marginalised people and empowerment of communities, and flourishing businesses.
 - The EU also aims to promote a **global transition to sustainable food systems**. Targeted R&I activities in particular under the EU-Africa Partnership on Food and Nutrition Security and Sustainable Agriculture (FNSSA) or global initiatives through international research consortia initiative will contribute to this ambition.

26

HORISONTTI EUROOPPA
— DATA TUTKIMUS JA INNOVATIIVIN OULU —

SSH in call text: examples

- “This topic should involve the effective contribution of SSH disciplines.”
- “Social innovation is recommended when the solution is at the socio-technical interface and requires social change, new social practices, social ownership or market uptake.”
- “...nature-based social innovation...”
- SSH specialist at AKA: Katja Marjanen
 - Tel. +358 295 33 5079, katja.marjanen@aka.fi

19

HORISONTTI EUROOPPA
— DATA TUTKIMUS JA INNOVATIIVIN OULU —

Laura: Official guidelines by EU

How to successfully integrate SSH(A)



Include partners with **relevant ssh competence**

Read carefully what kind of is asked for in the call text
Do not "tick the box" but include only relevant expertise that is needed for the project



Include ssh partners **already in the writing phase**

This will ensure that you get the right expertise already in the project planning phase
The application will be more convincing



Do not leave this to the last minute:
it needs time and good planning

Making sure that interdisciplinary projects are successful needs communication and might need a bit more time.

Take-home messages on SSH (social sciences and humanities) in proposal writing

1. Proposal

- Crucial to fit in SSH expertise/perspectives from the beginning of the proposal writing process and e.g. in the theoretic framework;
- SSH issues fit into applications submitted to AKA Biosciences, Health and the Environment" yet a strong natural science component is needed as a part of multidisciplinary approach;
- The affiliation (organisational profil) of the PI does not matter when submitting (SC) applications.

2. Panels

- Be scientific, but as concrete as possible when operationalizing the concepts (taking into account different backgrounds of the reviewers)
- If possible, get familiar with the panels (reviewers background, publications etc) prior to submission and find the strenght in panel members backgrounds

3. Impact

- Scientific excellence is important, yet impact section will make the success
- Think long-term for impact, short/medium term for EU policy objectives
- Indicators, even very simple one can be helpful (how many people will be reached etc.)
- Projec Centre support by organising impact workshops for H2020 projects, but also big applications more generally

4. SSH topic

- SSH increasingly stressed in H2020 proposal
- Moreover, the expected outcomes of the calls under Pillar 2 are very relevant for SSH, topics like social innovations, but also related to ethics and moral aspects of natural resource governance

Thank you!