



Biomass Atlas

Support for decision-making regarding investments and policies

The Biomass atlas gathers geographic information on biomasses into one user interface.

The online service is open for all and can be used e.g. for planning investments and raw material procurement, as well as support for environmental and energy policies.

The service can be used for searching for information on

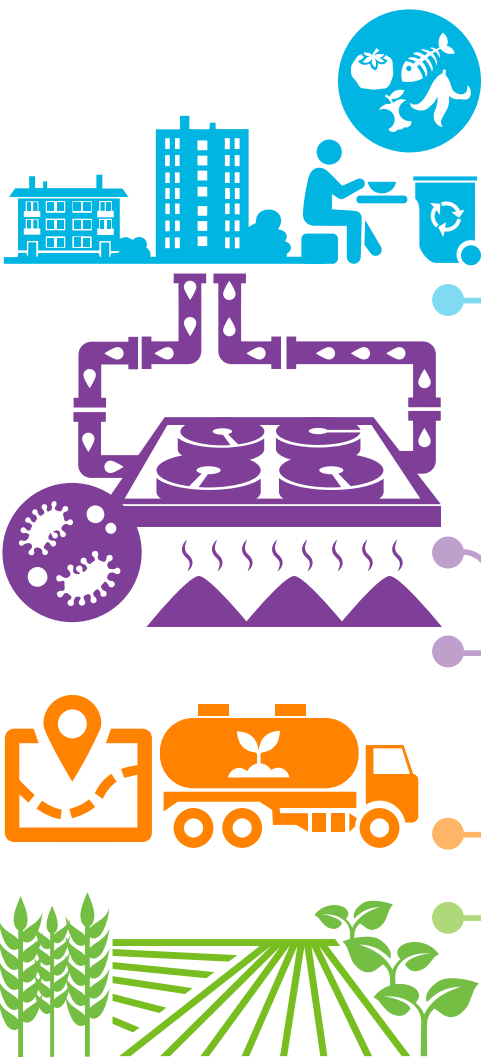
- land use,
- forest resources,
- side streams of fellings,
- production and side streams of field crops,
- manures,
- industrial and municipal biodegradable waste and sludge, as well as ashes from combustion plants everywhere in Finland.

Natural Resources Institute Finland (Luke) offers its expertise for sustainable and productive utilization of biomasses based on the data in the Biomass Atlas.

A USE CASE: Treatment of biodegradable municipal wastes

The aim is to utilize the sewage sludge and biological waste in energy production and their nutrients in plant production.

1. An analysis how much biological waste and sewage sludge forms in the region. Calculation of the methanisation potential of the masses.
2. The summary of fields and crops for evaluation the nutrient requirement. Calculation of the nutrient content of the masses.
3. Comparing the nutrient amounts of the bio-waste and sludge with the requirements of plants.
4. Computation of the transport distances to the fields where the nutrients from the masses can be utilized.
5. Generating a review on which fields sludge can be spread on by selecting suitable plant groups.



Interested? Please contact our specialist:

Eeva Lehtonen, Senior Scientist. +358 295 326 317, eeva.lehtonen@luke.fi.
Contact information for specific biomass materials: www.biomassatlas.fi